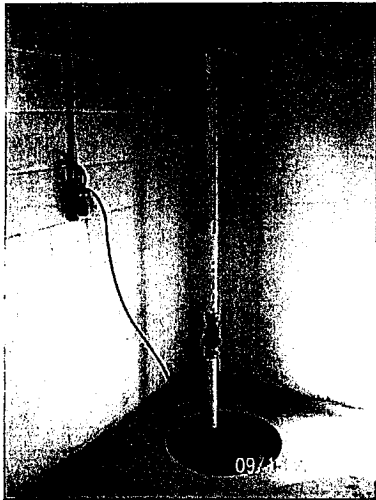
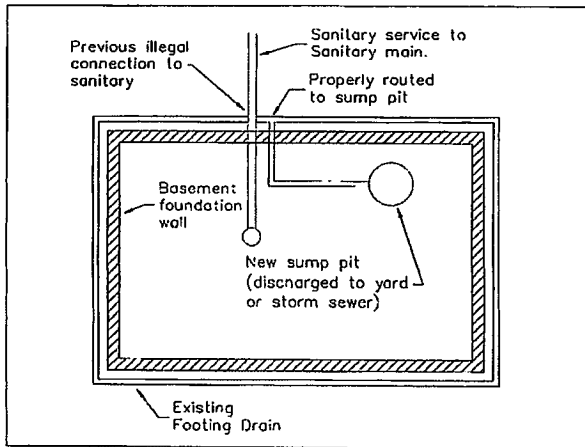


PROPER CONNECTION EXAMPLES

Sump water discharged outside of the house.



Disconnection of footing drains from sanitary sewer. Footing drains properly routed to sump pit.



TYPICAL CORRECTIVE ACTIONS THAT MAY BE REIMBURSABLE THROUGH THE CITY I & I PROGRAM:

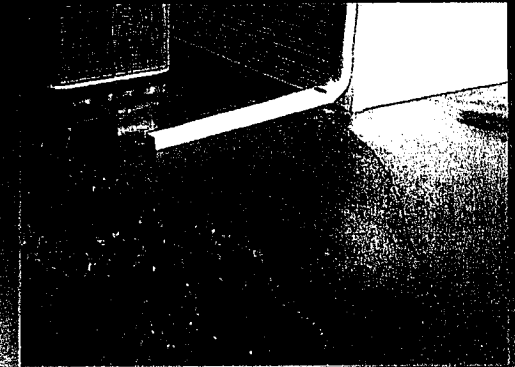
1. Disconnect footing drains and route to an existing sump pit.
2. Install sump pit and sump pump.
3. Install interior perimeter drain lines beneath basement floor.
4. Disconnect sump line from sanitary sewer and discharge sump water outside of building.
5. Disconnect roof drains from an unused cistern system or route cistern overflow to sump pit.
6. Limited repairs to sanitary service line.
7. Disconnect downspouts from sanitary sewer and install extensions for surface discharge.
8. Install or repair gutters and/or improve drainage around house by placing fill dirt (may be part of the corrective action plan instead of installing interior perimeter drain lines beneath basement floor).
9. Basic restoration upon completion of corrective action(s). Basic restoration inside the house includes returning the building to the level of finish it had prior to the corrective action work. Concrete floor is patched and smoothed, tiles are replaced with the closest match of available tile, and the work site is cleaned. Holes are filled with dirt and grass seed is sown outside the building or house.

WHAT IS NOT REIMBURSABLE THROUGH THE CITY I & I PROGRAM:

1. Backflow prevention (check) valves.
2. Extensive landscaping repair or enhancements.
3. Cleaning of sanitary service lines.
4. Backup power supply for sump pump and backup sumps.

CITY OF NEWTON

INFLOW & INFILTRATION I & I PROGRAM



A Citywide Program To Prevent
Sanitary Sewer Overflows and Sewer
Back-Ups By
Eliminating Storm Water and
Groundwater From Entering The
Sanitary Sewer System.



Engineering Department
641-792-6622, ext. 20

PROPERTY OWNERS

Know Your Responsibilities

According to Newton's City Code 24:0401

It is illegal for property owners to discharge storm water, surface water, ground water, roof runoff, subsurface drainage, (including interior and exterior foundation drains) uncontaminated commercial or industrial cooling water, or unpolluted industrial process waters to any sanitary sewer.

WHAT ARE THE BASIC STEPS IN THE CITY OF NEWTON INFLOW AND INFILTRATION (I & I) PROGRAM?

1. A district is established which may consist of one or more neighborhoods.
2. Property owners in the district will be notified by mail.
3. An information meeting is held.
4. Property owner calls City to schedule an inspection.
5. City staff will perform inspections outside of the house/building and in the basement.
6. If there are illegal connections, the City will provide a corrective action plan.
7. Owner has corrective work completed.
8. City does a final inspection.
9. Owner submits paperwork for financial assistance and will be reimbursed up to \$3,000 for qualified work.

WHAT IS INFLOW?

Inflow is storm water that enters the sanitary sewer system through:

- Footing drains
- Cistern roof collection systems
- Sump pumps
- Downspouts
- Yard drains

WHAT IS INFILTRATION?

Infiltration occurs when ground water seeps into sewer pipes through cracks, leaky joints or deteriorated manholes.

INFLOW AND INFILTRATION (I & I) IS ILLEGAL PER CITY CODE AND CAN CAUSE:

- Basement backups
- Sanitary sewer overflows
- Unnecessary treatment costs

WHY ARE WE SPENDING MONEY TO REDUCE I & I?

Compared to the cost of upsizing sewer pipe and building a larger wastewater treatment plant, reducing the amount of I & I in our sanitary sewer system is very beneficial for the long-term financial interest of every household, business and industry in the City.

WHEN WILL THE CITY GET TO MY NEIGHBORHOOD?

This program is city wide and may take 8 to 10 years to complete. Districts will be established in order of need based on areas upstream of past problems.

HOW WILL I KNOW THE INSPECTOR IS FROM THE CITY OF NEWTON?

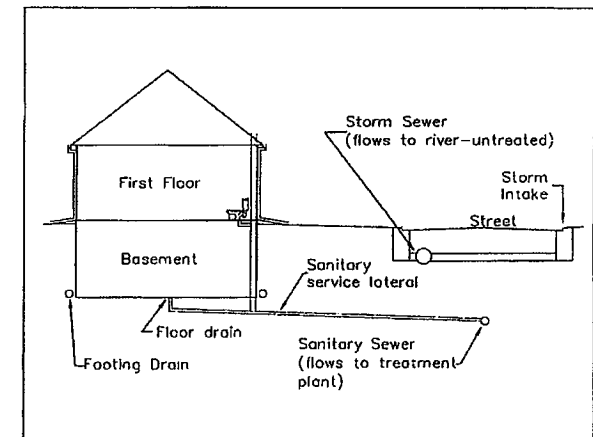
The inspector will drive a vehicle with a City of Newton Logo on the door and the inspector will be wearing a state issued City of Newton employee identification nametag.

NOTE: There must be an adult (age 18 or over) present at the property during the basement inspection.

DEFINITIONS:

SANITARY SEWER: carries wastewater from toilets, bathtubs, showers and basement floor drains to the City wastewater treatment plant.

STORM SEWER: carries rainwater to creeks and rivers (this water is not treated).



FOOTING DRAIN: drain tile along house foundation walls that collect groundwater to keep your basement dry.

SUMP PUMP: a pump located in a pit beneath the basement floor that pumps groundwater to the outside of the house to a storm pipe.

CISTERN: a tank used to collect roof rainwater. A cistern is often located in the basement or yard and the water is often used for washing clothes.